

SENEBOGEN

MATERIAL-HANDLER

824G



 123 kW
 90 kW
 392 kWh



Mobile up to 24.9 t
Crawler up to 27.1 t

 12 m



MAX CAB

Stage V

824G

The multi-talent.

With its reach of 12 m, the 824 G is a universal all-rounder in the recycling and scrap yard. In the challenging working environment, the robust machine impresses with maximum performance despite low consumption and masters every loading and sorting job. At the same time, the elevating comfort cab ensures a pleasant workplace with an excellent view of the surroundings.

Steel construction in in-house production

Our in-house steel construction enables us to create particularly high-quality welded joints that ensure stability and durability.

Energy efficiency

Appreciated around the world, thanks to resource and environmentally friendly drives and effective multi-circuit hydraulics.

Maximum comfort

The spacious cabs are designed with the needs of the operator in mind - comfortable and spacious with sophisticated features.

SENcon

The modern SENcon control system offers comprehensive convenience for operators, fleet managers and service personnel.

A long-term investment

The G series is characterized by robust components and intelligent machine design - the machine retains its value over the long-term, even with demanding continuous use.

Maintenance & Service

Intelligent fleet management and machine status monitoring via telemetry using the SENtrack portal as well as unique accessibility to machine components.

Modular variety

Unique machine variety - we build the perfect machine to meet the needs of your application.



50%

saving in operating costs by significantly reducing energy consumption

ELECTRO

SENNEBOGEN – WORLD LEADER IN ELECTRIC MATERIAL HANDLERS.

For over **35 years**, we have implemented by far the most electrical applications

- ✓ A complete solution direct from the manufacturer – detailed route analyses and individual power supply project planning, tailored specifically to your application
- ✓ A variety of solutions for power supplies, voltage types and emergency operating units ex works
- ✓ Electric motor with 400 V / 50 Hz
- ✓ No fueling stops or need to store fuel - always ready for use
- ✓ Service intervals twice as long and lower service costs: No need for fuel/oil filter and oil changes compared to diesel engine
- ✓ High value retention and significantly longer service life
- ✓ No exhaust gases – good for the environment, good for people
- ✓ Low-noise and vibration-free operation for greater working comfort
- ✓ Cleaner engine compartment even after long operating period

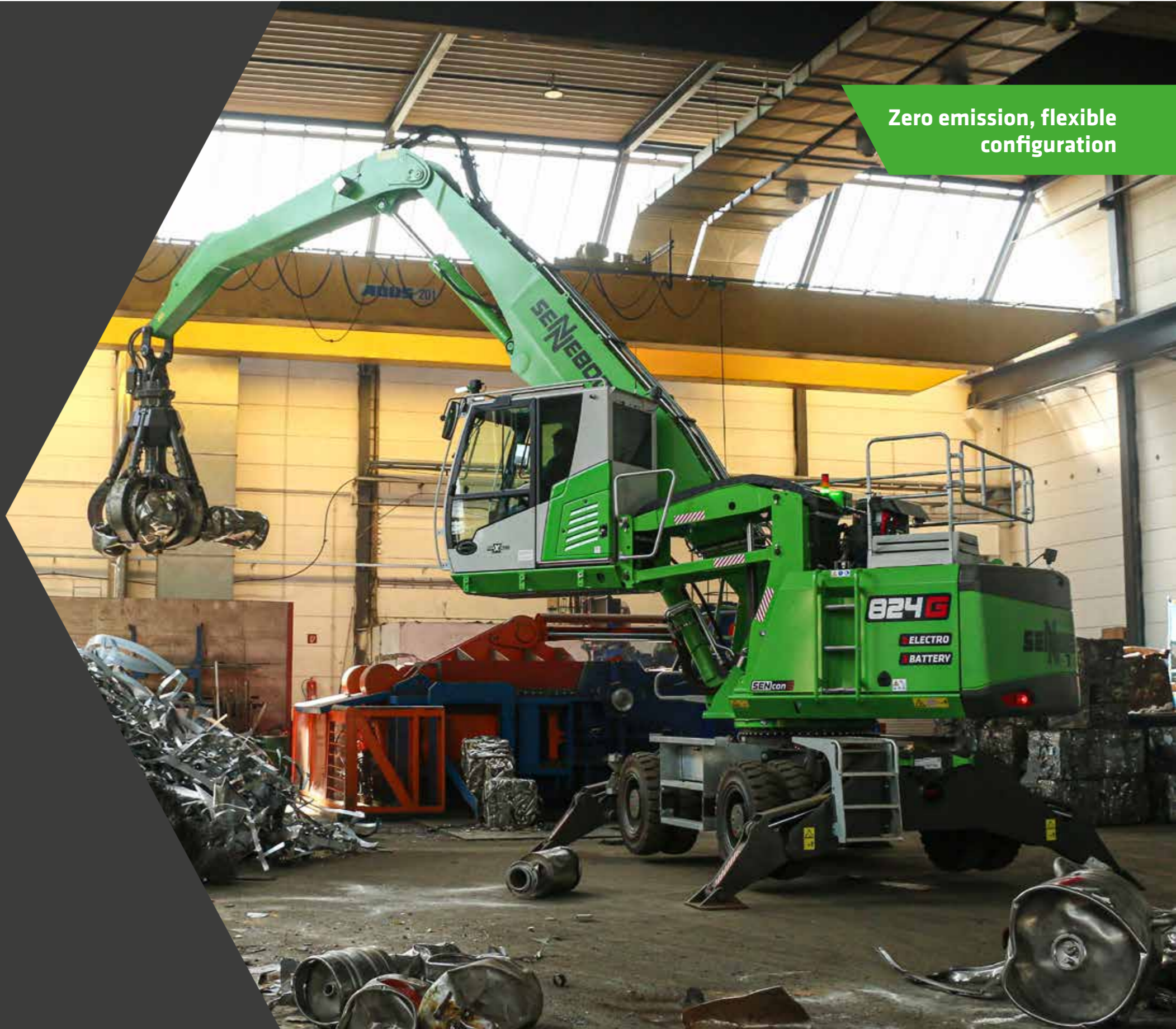
► **ELECTRO**

► **BATTERY**

BATTERY POWER OF THE NEW GENERATION.

- // Over 60 tonnes of CO₂ savings per year during operation
- // Active peak shaving: Start the engine using the battery; this smooths out load peaks and saves electricity costs
- // Modular battery capacity: Machine equipped with 1 to 4 battery packs for a maximum of 392 kWh
- // Consistent basic appearance regardless of the motor type – battery, electric, or diesel – thanks to new machine design
- // Selectable charging capacity: 44 kW with 2 onboard chargers or 66 kW with 3 onboard chargers (125 A CEE plug)
- // Dual power management: Flexible battery charging even while working thanks to high-voltage connection on the undercarriage

Zero emission, flexible
configuration



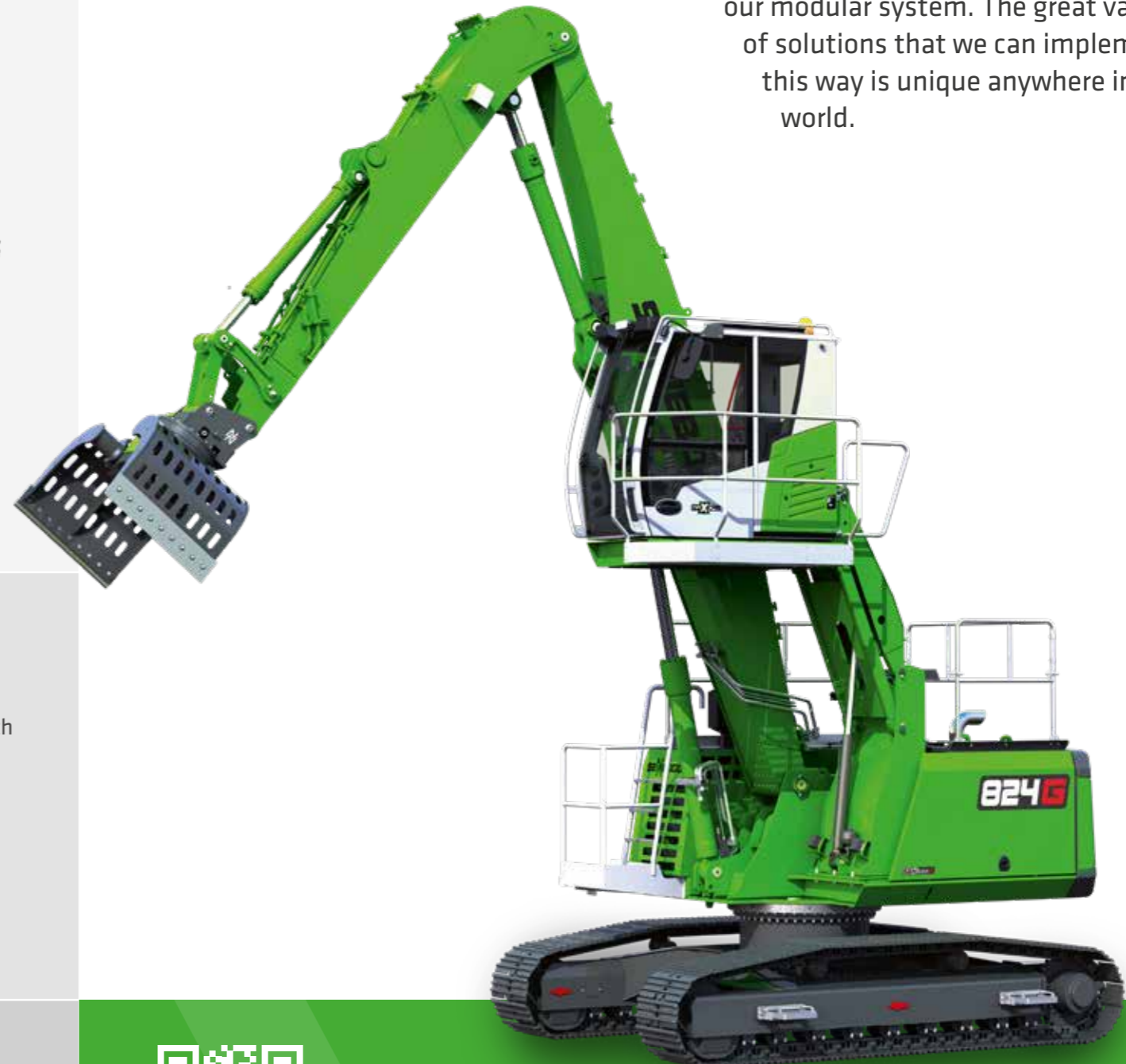
A MODULAR DESIGN. NUMEROUS APPLICATIONS.

WHAT DOES YOUR MACHINE LOOK LIKE?

EQUIPMENT



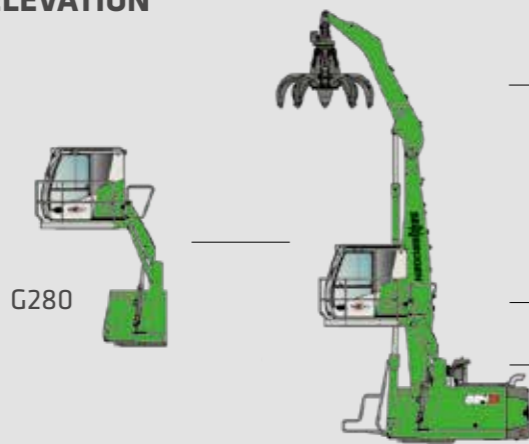
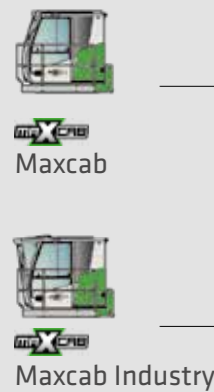
K = Compact boom
ULM = Equipment with tipping kinematics, e.g. for sorting grabs



Configure your individual machine from our modular system. The great variety of solutions that we can implement in this way is unique anywhere in the world.

CAB

CAB ELEVATION



- Diesel-hydraulic drive
 - Electro-hydraulic drive
 - Electro-hydraulic drive with battery technology
- OPTIONS**
- Motorized cable reel
 - Transformer

UPPERCARRIAGE

UNDERCARRIAGE

Pylon max. 0.5 m

Pylon max. 3 m



MP21

R25/240

4-point-pedestal



CUSTOM CONFIGURATION

More than 16.000 unique material handling solutions can be delivered through SENNEBOGEN's modular machine design - watch the video now!

www.sennebogen.com/versatility

MAXIMUM COMFORT.



Everything in view

The new Maxcab sets standards in terms of overview and functionality. Thanks to the generous panoramic view, you always have a perfect overview of your work area. Supported by modern safety cameras and an advanced monitor system, you can keep a comfortable and safe eye on the danger zone.

Intuitive operation

The heart of the new Maxcab is the 10-inch touch display, which gives you quick access to all important functions. In addition, buttons and switches for the most important settings ensure intuitive and efficient operation. The battery is automatically disconnected from electrical consumers when the machine is switched off.

Pleasant indoor climate

The Maxcab's modern automatic climate control ensures an optimally tempered working environment in any kind of weather. No matter if it's scorching heat or freezing temperatures - approach your tasks every day with composure and focus.

Individual operator profiles

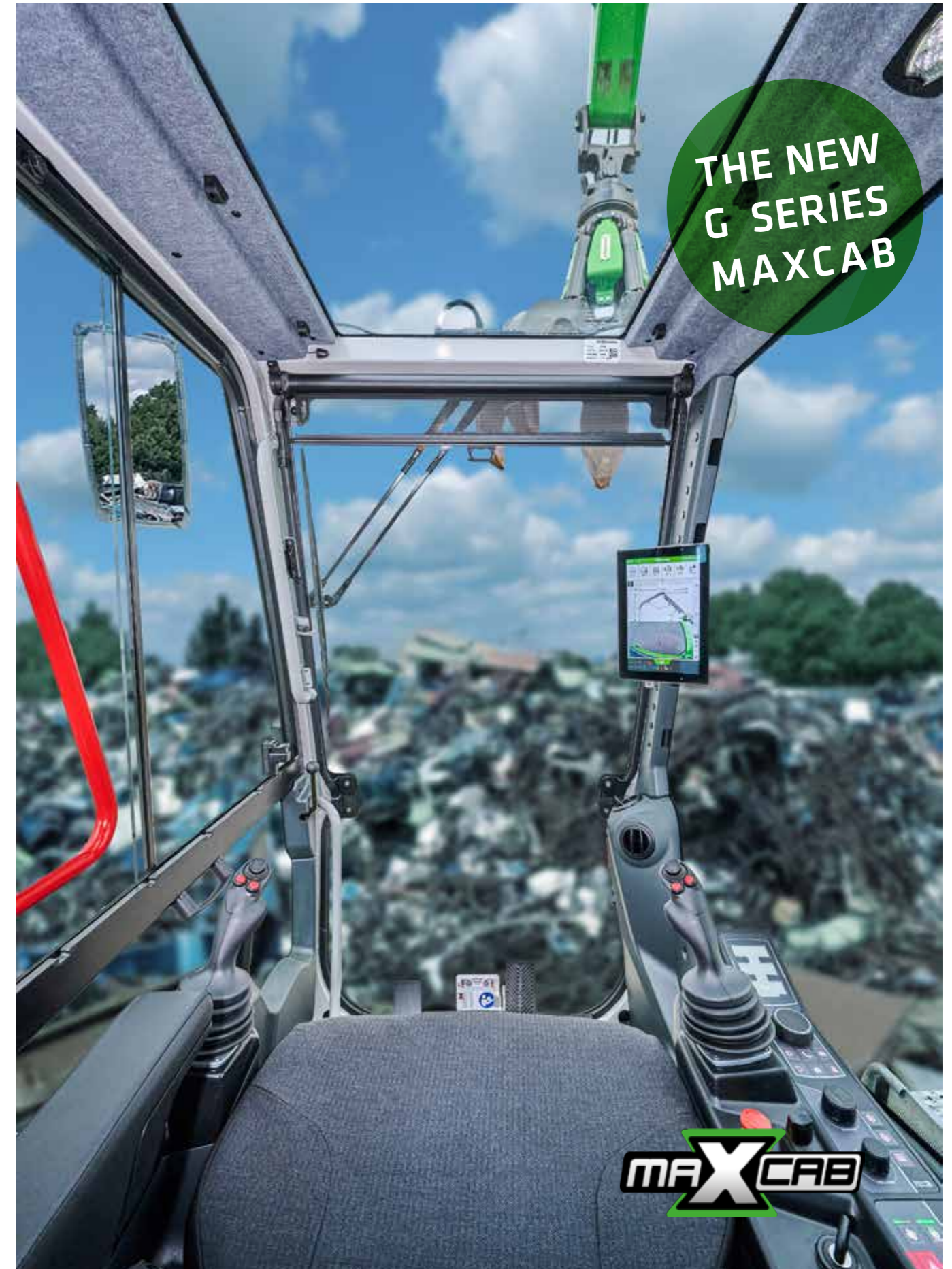
The Maxcab enables personalized settings for every operator, such as freely configurable joystick assignments. Simply get in, load the saved profile - and get going straight away.

New, modern interior

The Maxcab impresses with a completely revised interior design that meets the highest standards of ergonomics and comfort. High-quality materials and a well thought-out interior design create a pleasant working environment, while the continuous large windows ensure a generous feeling of space.

Easy control

The intelligent SENcon control system gives you quick and easy feedback on the machine's condition. Thanks to the intuitive user interface, it has never been easier to monitor energy consumption and utilization, control the desired working modes and contribute towards reducing operating costs.



THE NEW
G SERIES
MAXCAB

MAXCAB

SENcon The machine control of the future.

The modern SENcon control system offers comprehensive comfort for operators, fleet managers and service personnel.

Assistance systems increase work safety, make work processes more efficient and remote diagnostics quick and easy. Through the analysis of machine data, you can optimize the operation and reduce the CO₂ footprint of the machine.

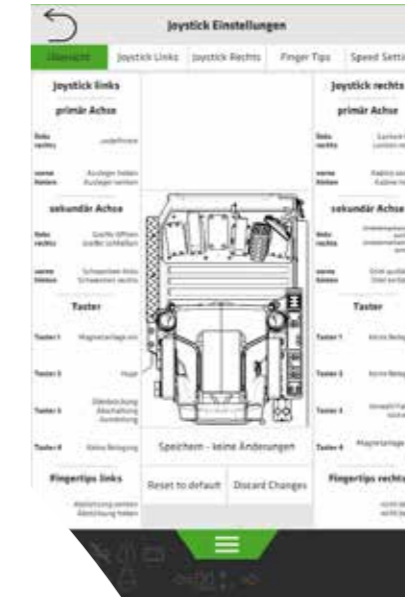
1. Driver comfort of tomorrow thanks to modern assistance systems

- Quickly setup & access to comprehensive driver profiles
- Integrated safety systems (e.g. work area limitation)
- Safe machine movements thanks to semi-autonomous movements
- Preparation for remote control and fully automated operation movements



2. Effective remote service reduces costs and saves time

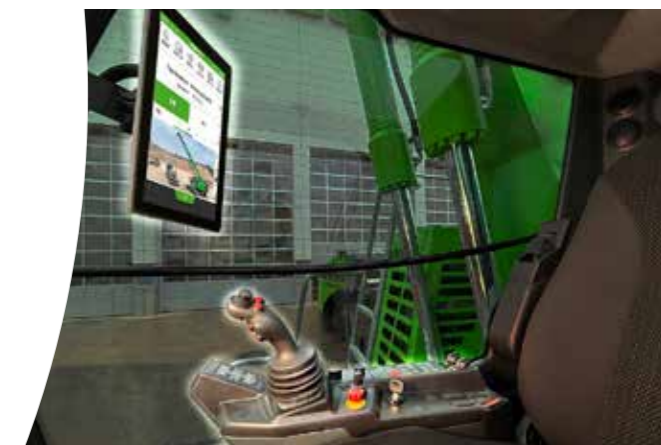
- Extract and analyze machine data from any location
- State-of-the-art diagnostic tool for effective remote diagnostics
- Guarantee of the best possible machine availability and operating safety



Quick access to all important functions via the large 10-inch touch display

3. Always up to date: Software updates over-the-air (SOTA)

- Efficient installation of new functions of the machine control system remotely without physical intervention in the machine
- Continuous work with the latest technology
- The machine remains maximally available and flexible in use



4. Intelligent analysis of machine data

- In combination with the telematic system SENtrack the machine data from SENcon becomes valuable information about work processes and the condition of the machine
- Functions such as the excavator scales ensure view of the current achieved handling performance
- Optimization of machines in use: simple and effective

CAB HIGHLIGHTS



SERIES	MAXCAB	Maxcab	Maxcab Industry
ENTRY		Sliding door incl. sliding pane	Sliding door incl. sliding pane
WINDSCREEN		optimal field of vision	Undivided windscreen in bullet proof glass, design, fixed glazing
RIGHT SIDE WINDOW		Laminated safety glass	Laminated safety glass
ROOF WINDOW		Roof panel made of safety glass	Roof panel made of bullet proof glass
WINDSCREEN WIPER		-	Windscreen wiper for roof window
		Windscreen washer system for front windscreen	Windscreen washer system for front windscreen
AIR CONDITIONING		Automatic climate control with fresh air and recirculation filter	Automatic climate control with fresh air and recirculation filter
SPOTLIGHT		powerful LEDs, integrated into the roof	Powerful LEDs, integrated into the roof
SENCON CONTROL AND DIAGNOSTICS SYSTEM		✓	✓
OPTIONS			
ROOF WINDOW		Windscreen wiper for roof window	-
PLATFORM		Platform with railing for safe access to	Platform with railing for safe access to
RADIO		DAB, with Bluetooth®-function, hands-free kit	DAB, with Bluetooth®-function, hands-free kit
AIR-CONDITIONED SEAT		✓	✓
PROTECTIVE VENTILATION SYSTEM		✓	✓
COOL BOX BEHIND THE DRIVER'S SEAT		✓	✓
PROTECTIVE GRILLE ON ROOF, AND WINDSCREEN		✓	✓
SUN PROTECTION PACKAGE		✓	✓

ALWAYS THE RIGHT VIEWING ANGLE

With the new **cab elevation**, the operator not only receives a great increase in viewing height for maximum safety and overview: Thanks to the extremely **robust design**, it also guarantees quiet and fatigue-free operation even during fast movements.



Viewing height (G280)
5.8 m

G SERIES
STANDARD
EQUIPMENT

PROFESSIONAL FLEET MANAGEMENT

SENtrack
TELECEMATIC SYSTEM

1. Reduce service costs

The dashboard is used to monitor the machine and its main operating parameters (temperatures, consumption). If key figures deviate significantly from the target value, the user is informed immediately.

2. Reduce consumption

You will receive daily updated insights into your fleet processes: Easily identify and optimize times when machines are idle or change set parameters when machines are underloaded to reduce consumption.

3. Improve productivity

With just a few clicks, you can identify and optimize machine capacity, analyze routes if required and thus make your port processes more profitable.

4. Safeguard your investment

Practical alarm messages inform you about critical machine conditions. In the event of irregular movements, the machine can also easily be deactivated remotely.

„What if you could receive real-time data from all your machines with just one click and so increase your productivity? SENNEBOGEN's SENtrack telematic system makes this possible. With the G series, you get the benefits of the monitoring tool as standard!”



MAINTENANCE AND SERVICE.

KEEP IT SIMPLE. WITH MANAGEABLE TECHNOLOGY.



Reliable and practical technology makes life easier. We rely on hydraulics, electrics and electronics where they are most useful.



We make you happy, not reliant. With cost-effective components and fewer process steps, you can take care of the machine on your own.



The central electrical distributors and electronic modules facilitate maintenance, service and, if necessary troubleshooting.



The SENNEBOGEN Troubleshooter is a guided troubleshooting tool for the fastest possible solution in the case of service.



All maintenance and service points are clearly arranged and easily accessible. The clear labeling of components makes finding your way around easy.

TECHNICAL DATA, EQUIPMENT

MACHINE TYPE

MODEL (TYPE) 824 G

TANK CAPACITIES

FUEL	300 l
AD BLUE	30 l
HYDRAULIC TANK	240 l
COOLANT	approx. 40 l
ENGINE OIL	approx. 18 l
HYDRAULIC OIL	SENlube HYDRO D46
CENTRAL LUBRICATION SYSTEM	Automatic central lubrication for equipment and slewing ring, display of fault and empty message via SENcon

ENGINE

TYPE	824 G DIESEL	824 G ELECTRIC	824 G BATTERY
	Stage V: Cummins B4.5 Rated power 123 kW/2200 rpm Operating point standard 123 kW/2200 rpm Operating point ECO 123 kW/2200 rpm Automatic idle/stop	Power 90 kW at 400 V/50 Hz Total connected load 110 kVA (125 kVA with magnetic system) Machine-side fuse protection 160 A (200 A with magnetic system)	Power 90 kW at 400 V/50 Hz Engine start-up via frequency converter without start-up current peaks
COOLING	water-cooled, charge air cooling, coolant cooling		
DISPLACEMENT	4.5 l		
NUMBER OF CYLINDERS	4		
BATTERIES	2 x 110 Ah / 750 A, battery disconnect switch		
ELECTRICAL SYSTEM	24 V		
OPTIONS	Engine block heater Electric fuel pump Cyclone pre-separator for use with high dust loads		

UPPERCARRIAGE

DESIGN	Torsion-resistant box design, precision crafted, steel bushings for boom mounting, engine installed in the longitudinal direction
COOLING SYSTEM	Cooling system with 3 cooling circuits and demand-based fan control, consisting of charge air cooling, coolant cooling and hydraulic oil cooling, hydraulically driven, thermostatically controlled incl. fan reversal
OPTIONS	LED lighting package Swing bearing brake Fire extinguisher Low-temperature packages Hydraulic tank preheating 15 kW magnetic generator Additional ballast 1 t Comprehensive uppercarriage railings Compressor for cleaning the machine Warning beacons and alarm horns

TECHNICAL DATA, EQUIPMENT

HYDRAULIC SYSTEM

	Load sensing / LUDV hydraulic system
OPERATING PRESSURE	up to 350 bar
LOAD LIMIT CONTROL	Optimized load limit control; in order to use the best possible operating point of the diesel engine at all times, even under full load
CONTROL SYSTEM	Proportional, precision electrical control of work movements, 2 electronic joysticks for work functions, additional functions via switches and foot pedals
SAFETY	Hydraulic circuits safeguarded with safety valves Pipe-fracture safety valve for stick and compact boom as standard Emergency lowering of the equipment in case of engine standstill
OPTIONS	Bio-oil filling Tool Control for programming pressure/rate of up to 10 tools Load torque warning with capacity display Overload safeguard with shutdown SENNEBOGEN HydroClean micro-filter system (3 µm) with water separator Supplementary hydraulic circuit for hydraulic packages Hydraulic oil SENlube HYDRO POLAR for up to -30°C surrounding temperature

SLEWING DRIVE

GEARBOX	Planetary gearbox with axial piston motor, integrated brake valves
PARKING BRAKE	Spring-loaded, hydraulically ventilated-multi-disk safety brake
SLEWING RING	internal gearing, strong ball bearing ring, sealed
SLEWING SPEED	0-8 rpm
TORQUE	60 kNm



TECHNICAL DATA, EQUIPMENT

CAB*

CAB TYPE	Maxcab, 2.8 m elevation
CAB FEATURES	Sliding door incl. sliding window, vibrationdamped, tinted safety glass, safety glass side window, skylight, windscreen wiper, sunblind for front and roof windows, integrated microphone for hands-free system, air-suspended comfort seat, automatic climate control with fresh air and recirculated air filter, joystick steering (mobile version), SENcon control, emergency OFF
OPTIONS	<ul style="list-style-type: none"> Maxcab Industry, continuous bulletproof glass pane Protective roof guard, FOPS if applicable Protective front guard Active carbon filter for outside air Auxiliary heating system Air-conditioned comfort operator's seat Radio (DAB), with Bluetooth® function, hands-free system Multifunctional armrests Protective ventilation system Steering wheel control 30° tilt cab Sun protection packages

MOBILE UNDERCARRIAGE

MP21 mobile undercarriage with integrated 4-point outrigger, steering axle with automated pendulum axle, pendulum axle cylinder with pipe fracture safety valve, allwheel drive powered by an adjustable hydraulic motor with external, automatically actuated brake valve and 2-stage power shift transmission, planetary axles with integrated steering cylinders, 1-way accelerator pedal, service brake with 2-circuit system, multi-disc brake as parking brake

TIRE TYPE	8 x 10.00-20
BRAKES	hydraulic
TRAVEL SPEED	0-20 km/h variable
OPTIONS	<ul style="list-style-type: none"> Up to 0.5 m pylon Stabilizer blade Support plate Pneumatic tires

CRAWLER UNDERCARRIAGE

R25/240 crawler undercarriage in stable, torsionally rigid box construction with hydraulic travel drive, hydraulically ventilated, spring-loaded multi-disc brake as parking brake

TRAVEL SPEED	0-4.0 km/h
EQUIPMENT	600 mm triple grouser shoes
OPTION	700 mm triple grouser shoes



TECHNICAL DATA, EQUIPMENT

EQUIPMENT

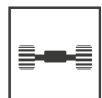
RANGE	up to 12 m
CYLINDER	Hydraulic cylinder with high-quality sealing and guide elements, end position damping, sealed mounting points
OPTIONS	<ul style="list-style-type: none"> LED lighting Adjustable height and radius limitation Stick mounted camera Equipment type "ULM" with tipping kinematics Boom damping

OPERATING WEIGHT

MASS	<p>Mobile</p> <p>24.9 t with MP21 and K10 incl. attachment</p> <p>Crawler</p> <p>27.1 t with R25/240 and K10 incl. attachment</p>
NOTE	Operating weight varies by model and equipment.



LOAD RATINGS K11 ULM (CRAWLER)



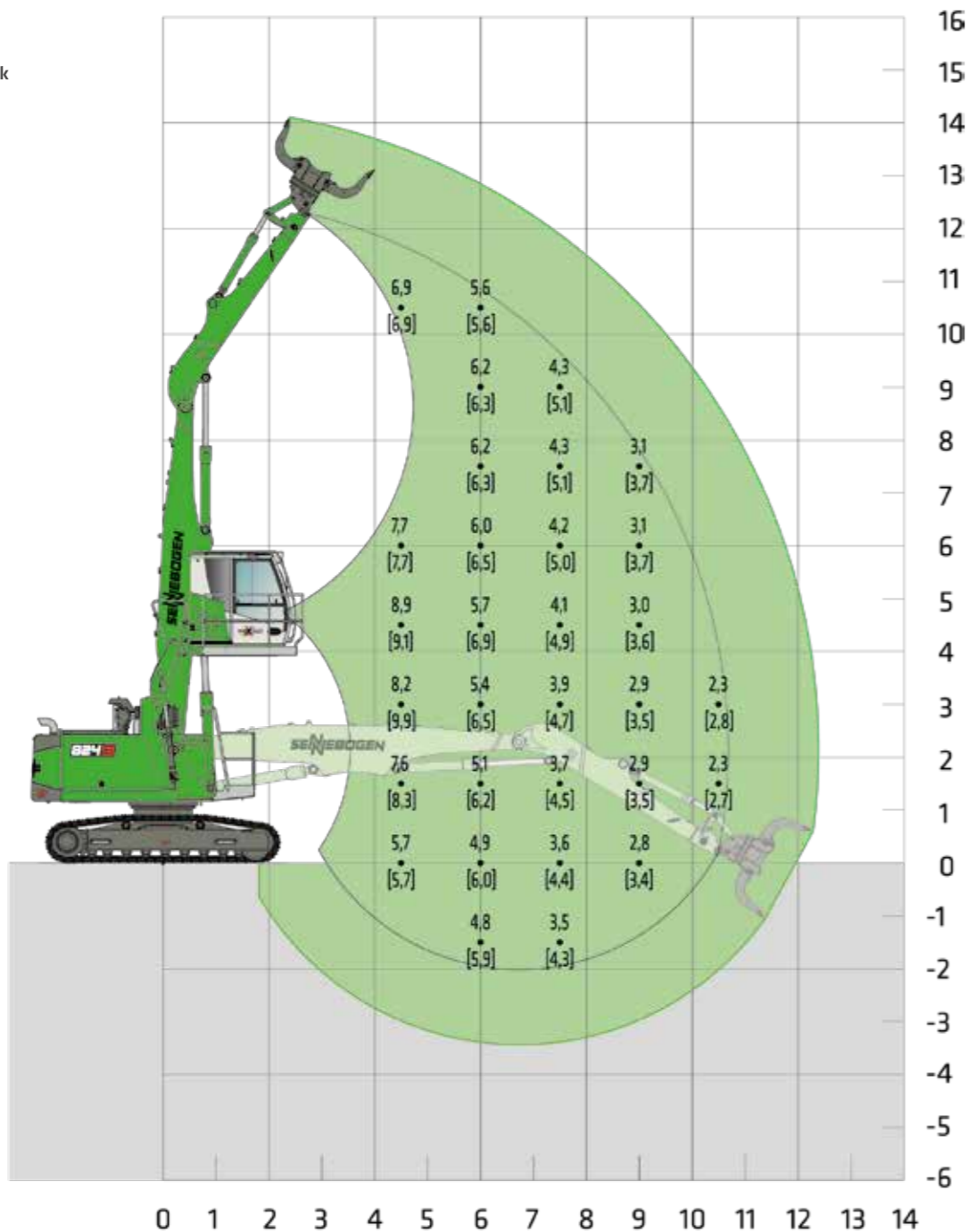
R25/240



MAXCAB
2.80 m elevating (G280)



6.5 m boom
4.3 m grab stick



Machine shown in mirror image

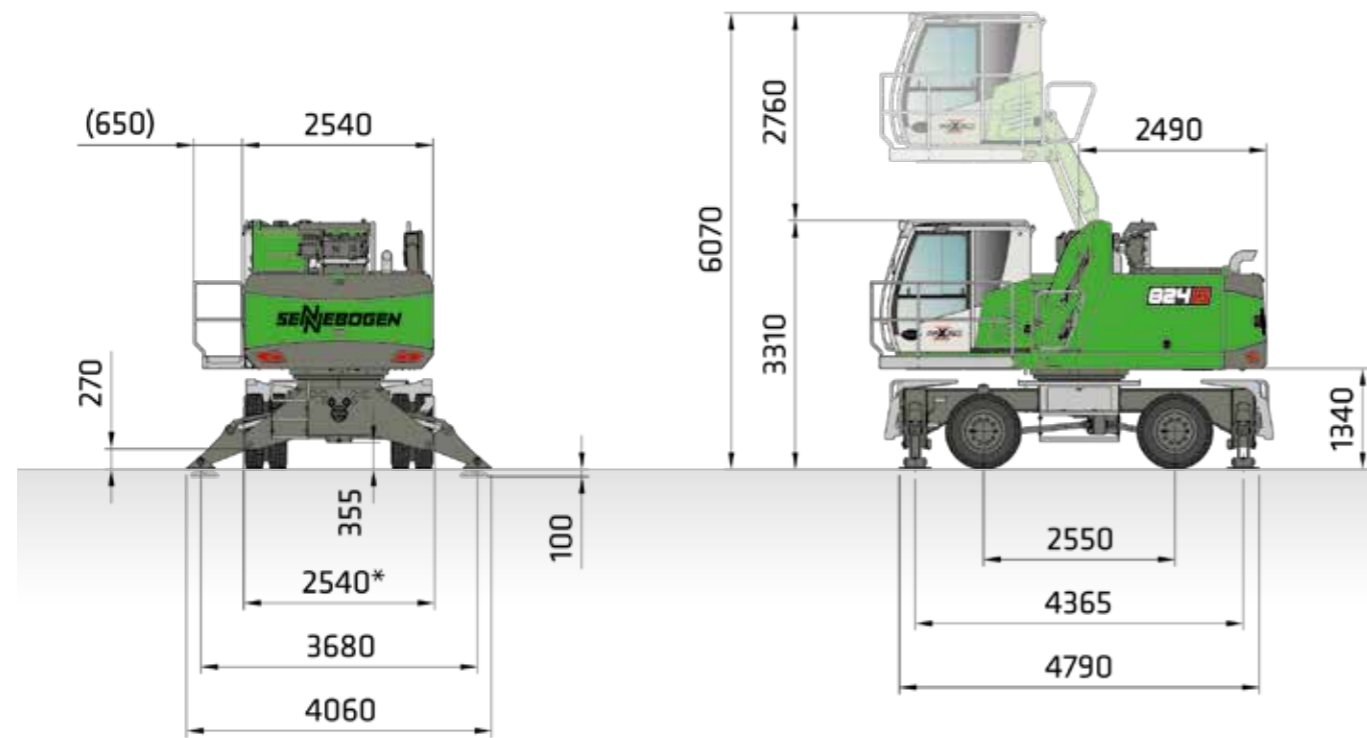
20220916150601

Notes:
All load ratings are given in tons (t) brought to bear at the end of the stick, without tools on firm level ground. Working tools such as grab, magnet, load hook, etc. are included in the specified load ratings. The stated values are 75 % of the static tipping load or 87 % of the hydraulic lifting force according to ISO10567. According to EU standard EN 474/5, hydraulic material handlers used for hoisting must be equipped with a pipe rupture safety device on lifting and stick cylinders and an overload warning device. The specified load ratings apply to maximum track width and 360° slewing.



Optimal overview of the working environment thanks to 2.80 m elevating cab

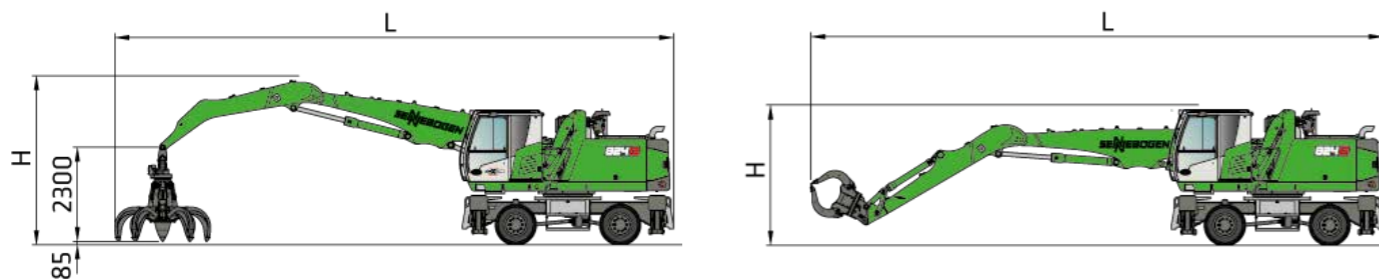
DIMENSIONS MOBILE



* = Transport width

824 G WITH MP21 MOBILE UNDERCARRIAGE AND G280 HYDRAULICALLY ELEVATING CAB (SERIES), SOLID RUBBER TIRES 10.00-20 (8X)

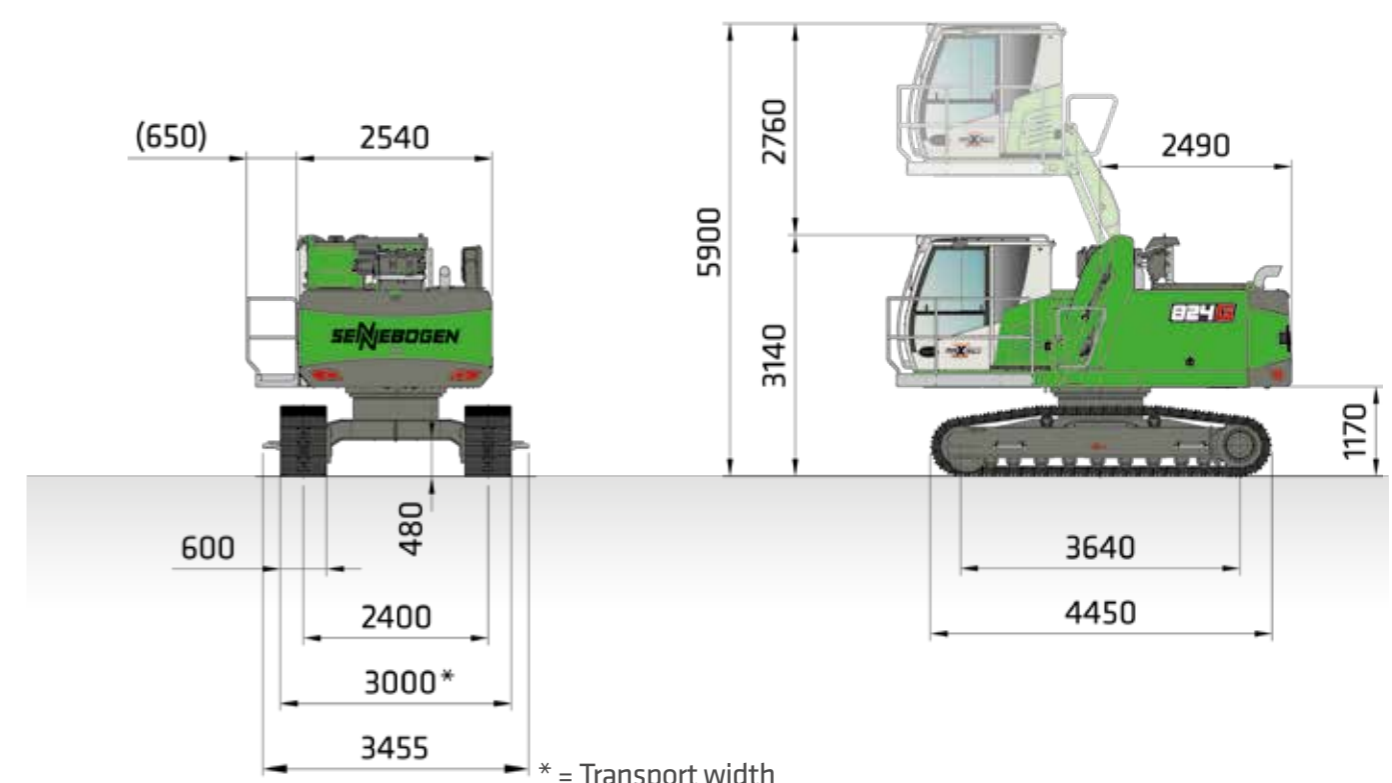
VERTICAL CLEARANCE WITH 600 L ORANGE PEEL GRAB VERTICAL CLEARANCE WITH 450 L SORTING GRAB



	COMPACT BOOM	GRAB STICK	PASSAGE LENGTH (L)	VERTICAL CLEARANCE (H) ORANGE PEEL GRAB	VERTICAL CLEARANCE (H) SORTING GRAB
K10	6.0 m	4.0 m	13.8 m	4.3 m	
K10 ULM	6.0 m	4.3 m ULM	14.0 m		3.35 m
K11	6.5 m	4.5 m	15.0 m	4.4 m	
K11 ULM	6.5 m	4.3 m ULM	14.5 m		3.35 m
K12	7.0 m	5.0 m	15.7 m	4.6 m	

further transport dimensions available on request

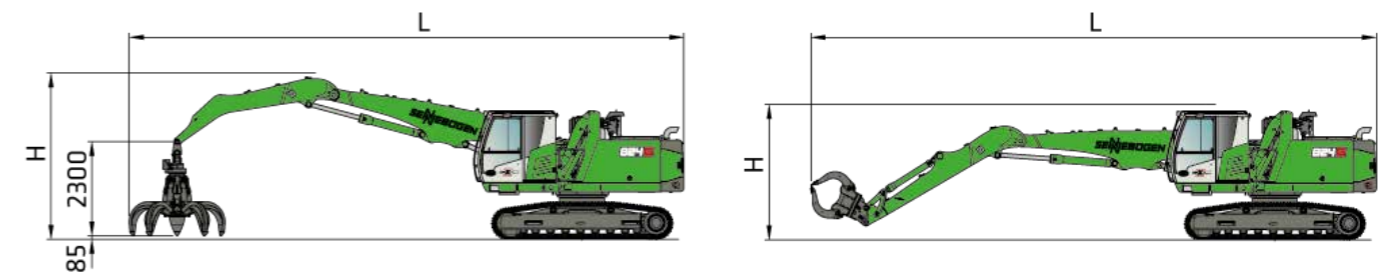
DIMENSIONS CRAWLER



* = Transport width

824 G WITH R25/240 CRAWLER UNDERCARRIAGE AND G280 HYDRAULICALLY ELEVATING CAB (SERIES)

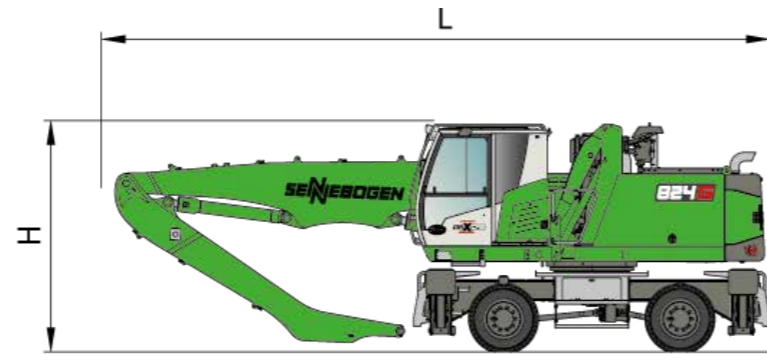
VERTICAL CLEARANCE WITH 600 L ORANGE PEEL GRAB VERTICAL CLEARANCE WITH 450 L SORTING GRAB



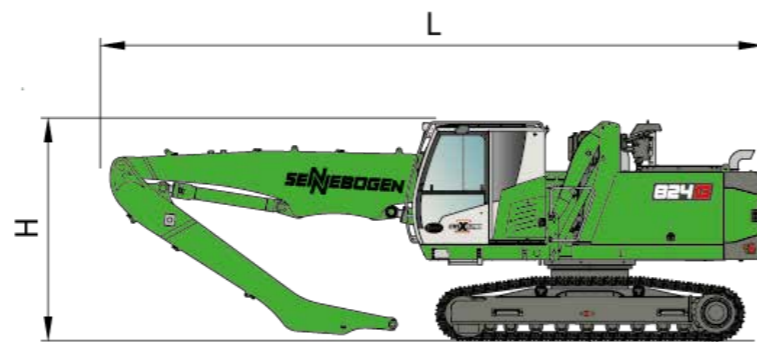
	COMPACT BOOM	GRAB STICK	PASSAGE LENGTH (L)	VERTICAL CLEARANCE (H) ORANGE PEEL GRAB	VERTICAL CLEARANCE (H) SORTING GRAB
K10	6.0 m	4.0 m	13.7 m	4.3 m	
K10 ULM	6.0 m	4.3 m ULM	14.0 m		3.3 m
K11	6.5 m	4.5 m	14.7 m	4.4 m	
K11 ULM	6.5 m	4.3 m ULM	14.5 m		3.3 m
K12	7.0 m	5.0 m	15.7 m	4.6 m	

further transport dimensions available on request

TRANSPORT DIMENSIONS MOBILE/CRAWLER



824G TRANSPORT DIMENSIONS MP21				
	COMPACT BOOM	GRAB STICK	TRANSPORT LENGTH (L)	TRANSPORT HEIGHT (H)
K10	6.0 m	4.0 m	9.3 m	3.35 m
K10 ULM	6.0 m	4.3 m ULM	9.3 m	3.35 m
K11	6.5 m	4.5 m	9.7 m	3.35 m
K11 ULM	6.5 m	4.3 m ULM	9.7 m	3.35 m
K12	7.0 m	5.0 m	10.2 m	3.35 m



824G TRANSPORT DIMENSIONS R25/240				
	COMPACT BOOM	GRAB STICK	TRANSPORT LENGTH (L)	TRANSPORT HEIGHT (H)
K10	6.0 m	4.0 m	9.2 m	3.3 m
K10 ULM	6.0 m	4.3 m ULM	9.2 m	3.3 m
K11	6.5 m	4.5 m	9.7 m	3.3 m
K11 ULM	6.5 m	4.3 m ULM	9.7 m	3.3 m
K12	7.0 m	5.0 m	10.2 m	3.3 m





SENNEBOGEN ACADEMY

Increase your knowledge because success is based on knowledge. In the SENNEBOGEN ACADEMY we place great importance on ensuring it flows powerfully.
 ↳ www.sennebogen-academy.com



SERVICE AND MAINTENANCE

Comprehensive customer service. And supply of spare parts. Service is a TOP priority for us.
 ↳ www.sennebogen.com/customer-service



SENtrack

Efficient fleet management with SENtrack: use information that would otherwise stay hidden and increase your efficiency.
 ↳ www.sennebogen.com/sentrack



RENTAL & USED

Discover the unique range of rental machines available from SENNEBOGEN Rental & Used. Find your rental machine here:
 ↳ www.sennebogen-rental-used.com

JOIN OUR OPERATORS' CLUB

The spotlight is on you and your machine! We focus on exclusive information, sharing experiences with other SENNEBOGEN operators as well as fun and enthusiasm.

All the benefits here ↳ www.sennebogen.com/operators-club



MOVE BIG THINGS WITH US



over **73**
years of experience

100%
family company

over **2200**
experienced specialists worldwide

5
production plants in Germany

over **180**
sales and service partners worldwide

27
different material handlers



Telehandler
4-6 t

Balancer
130-300 t

Material handler
17-460 t

Duty cycle crane
30-300 t

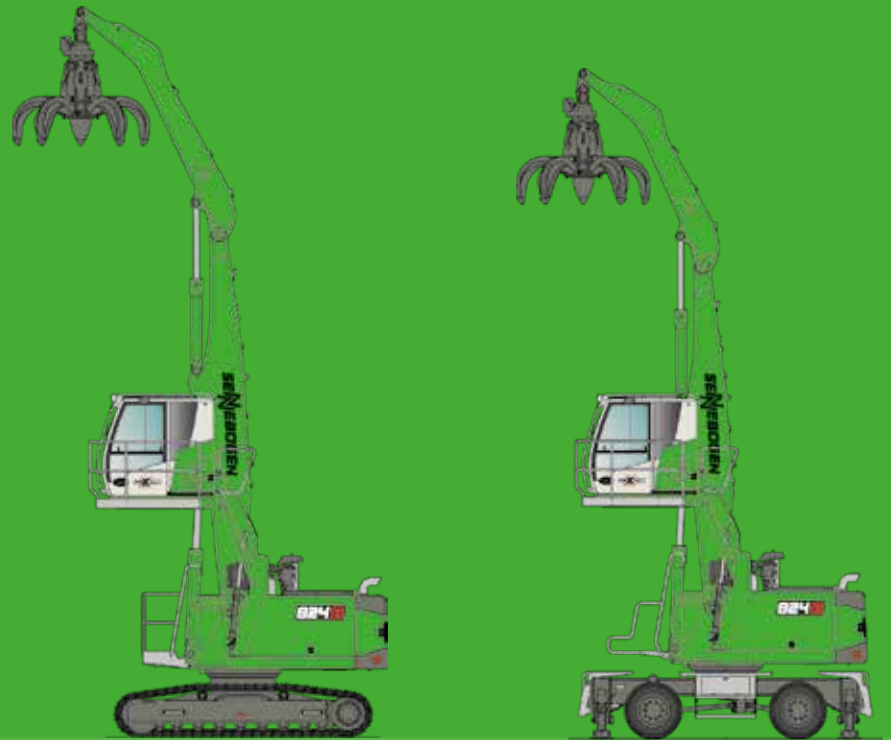
Crawler crane
50-300 t

Telescopic crane
16-200 t

Port crane
300 t

This catalog describes machine models, the scope of equipment of individual models, and configuration options (standard equipment and optional equipment) of the machines delivered by SENNEBOGEN Maschinenfabrik GmbH. Machine illustrations may contain optional and supplementary equipment. Actual equipment may vary depending on the country to which the machines are delivered, especially in regard to standard and optional equipment. All product designations used may be trademarks of SENNEBOGEN Maschinenfabrik GmbH or other supplying companies, and any use by third parties for their own purposes may violate the rights of the owners.

Please contact your local SENNEBOGEN sales partner for information concerning the equipment variants offered. Requested performance characteristics are only binding if they are expressly stipulated upon conclusion of the contract. Delivery options and technical features are subject to change. All information is supplied without liability. Equipment is subject to change, and rights of advancement are reserved. © SENNEBOGEN Maschinenfabrik GmbH, Straubing, Germany. Reproduction in whole or in part only with written consent of SENNEBOGEN Maschinenfabrik GmbH, Straubing, Germany.



SENNEBOGEN
Maschinenfabrik GmbH
Hebbelstrasse 30
94315 Straubing, Germany

 www.sennebogen.com

MOVE BIG THINGS


Green Line Sales

 +49 (0) 9421 / 540 - 146

 materialhandling@sennebogen.de

SPARE PARTS CENTER

Spare parts orders

 spareparts@sennebogen.de

AFTER SALES

Technical support

 service@sennebogen.de