



MULTIFARMER  
MF34.7



## PERFORMANCE AND FEATURES

## MF34.7

## MF34.7 CS

## MF34.7CS CVT

### PERFORMANCE

Total unladen weight (kg)

7900

8000

8000

Maximum capacity (kg)

3400

3400

3400

Lifting height (m)

6,85

6,85

6,85

Maximum reach (m)

3,84

3,84

3,84

Maximum operating height (m)

6,85

6,85

6,85

Maximum operating reach (m)

1,73

1,73

1,73

Capacity at maximum height (kg)

3400

3400

3400

Capacity at maximum reach (kg)

1500

1500

1500

Lateral boom movement (mm)

-

-

-

Tilting correction (%)

+/-8

+/-8

+/-8

Boom sections

2

2

2

### POWERTRAIN

Turbo motor

Deutz TCD3.6

Deutz TCD3.6

Deutz TCD3.6

Displacement/cylinders

3600/4

3600/4

3600/4

Engine Power (kW/HP)

100/136

100/136

100/136

Anti-pollution technology

STAGE IV, SCR+DOC

STAGE IV, SCR+DOC

STAGE IV, SCR+DOC

Reversible fan

○

○

○

Maximum speed (km/h)

40

40

40

Fuel tank (l)

140

140

140

AdBlue tank (l)

18

18

18

Hydrostatic transmission

● - 2V

● - 2V

CVTronic

EPD

Top

Top

Top

Axles

Axial

Axial

Axial

Reduction hub

Epicyclic

Epicyclic

Epicyclic

Machine brakes

Wet disc

Wet disc

Wet disc

Automatic parking brake

●

●

●

### HYDRAULIC

Hydraulic pump

LS + FS

LS + FS

LS + FS

Flow rate/pressure (l/min – bar)

145 – 210

145 – 210

145 – 210

Hydraulic tank

100

100

100

Hydraulic outlet at the top of the boom

●

●

●

Rear hydraulic outlets

2 - ●

2 - ●

2 - ●

### CAB

Cab configuration

ECO

ECO

ECO

MCDC

Light

Light

Light

FOPS LIV II cab

●

●

●

ROPS cab

●

●

●

Cab commands

Electronic joystick

Electronic joystick

Electronic joystick

Tilting Cab

-

-

-

Reverse shuttle

Dual reverse

Dual reverse

Dual reverse

### CONFIGURATION

Cab suspension

-

●

●

Boom suspension

○

○

○

Suspension on axles

-

-

-

Work headlights on cab

●

●

●

Sun blind

○

○

○

Tac-lock

●

●

●

Provision for a platform

○

○

○

Two floating forks

●

●

●

Inching-Control

●

●

●

Four-wheel drive

●

●

●

Four-wheel steering

●

●

●

Three steering modes

●

●

●

Standard tyres

460/70-R24

460/70-R24

460/70-R24

Optional tyres

-

-

-

Stabilisers

-

-

-

Turret rotation

-

-

-

Type approval as an agricultural tractor

●

●

●

Approval with PNEUMATIC braking

○

○

○

Approval with HYDRAULIC braking

○

○

○

PTO

●

●

●

3-point linkage

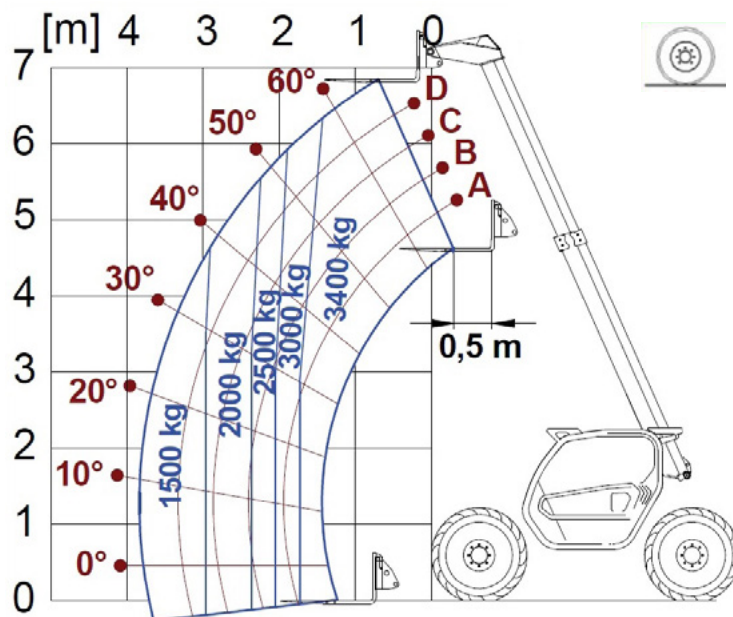
●

●

●

- Not Available. ● standard. ○ optional.

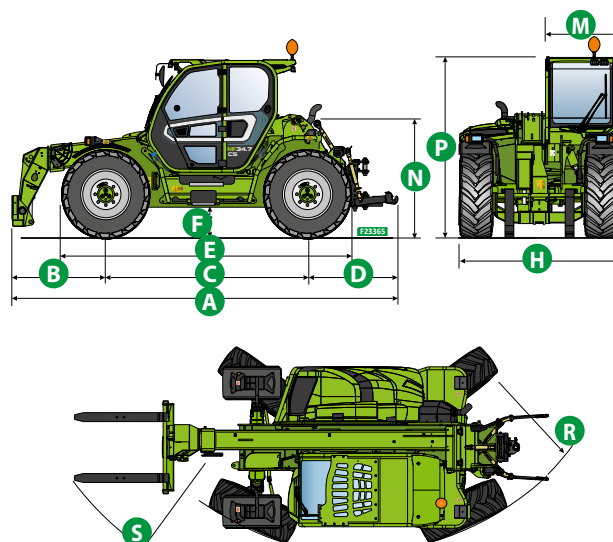
## LOAD CHARTS



MF34.7

## DIMENSIONS

	MF34.7		
A (mm)	5440		
B (mm)	1325		
C (mm)	2850		
D (mm)	1265		
E (mm)	4100		
F (mm)	430		
H (mm)	2240		
M (mm)	995		
N (mm)	-		
P (mm)	2485		
R (mm)	3825		
S (mm)	4900		





## GLOSSAR

<b>SCR</b>	<b>Selective Catalyst Reduction</b> , solution used for the reduction of NOx in the exhaust gases through the injection of a liquid - UREA (AdBlue) - into the exhaust gases.
<b>DPF</b>	<b>Diesel Particulate Filter</b> , a solution used to reduce fine particle emissions in exhaust gases
<b>DOC</b>	<b>Diesel Oxidation Catalyst</b> , a solution used to reduce carbon monoxide (CO) and hydrocarbons in exhaust gases
<b>EGR</b>	<b>Exhaust Gas Recirculation</b> , a solution used to reduce NOx in exhaust gases by recirculating gas inside the combustion chamber of the engine.
<b>1-2V</b>	1 or 2 speed <b>Merlo gearbox</b>
<b>CVTronic</b>	<b>Continuous variation Merlo gearbox</b> , for constant acceleration without loss of torque
<b>EPD</b>	<b>Eco Power Drive</b> , Merlo electronically-controlled hydrostatic transmission Electronic, enables effective RPM management in order to reduce overall fuel consumption by the machine
<b>EPD Plus</b>	In addition to the <b>EPD</b> Control, it is also possible to work using Speed Control (maintaining a constant travel speed) and Heavy Load (management of RPM in order to maximise performance for tasks such as: bucketing operations, heavy duty unloading, etc.)
<b>EPD Top</b>	In addition to the <b>EPD Plus</b> control function, this enables the RPM to be managed directly using the joystick
<b>Gear</b>	<b>Fixed displacement pump with gears</b> , combined with an open centre hydraulic distributor
<b>LS</b>	Variable displacement pump with <b>Load Sensing</b> control, combined with a closed centre hydraulic distributor
<b>LS+FS</b>	Variable displacement pump with <b>Load Sensing</b> control, combined with a closed centre hydraulic distributor equipped with solenoid valves and <b>Flow Sharing</b> control.
<b>Kabine ECO/PREMIUM</b>	<b>MODULAR</b> type cabin with simplified or PREMIUM equipment
<b>MCDC</b>	Merlo Dynamic Load Control, electronic control of the machine's anti-overturn system. • <b>Light</b> : Simplified version; • <b>Complete</b> : Version with display in cab.
<b>FOPS</b>	Falling object protective structure, the system which shields the operator from heavy objects falling onto the cab. Two levels: • <b>FOPS Liv I</b> : Object with a weight of 45 kg falling from 3 metres • <b>FOPS Liv II</b> : Object with a weight of 227 kg falling from 5.2 metres
<b>ROPS</b>	<b>Roll-over protection system</b> (or roll-over protection structure), the system that protects the operator if the vehicle rolls over
<b>Finger Touch</b>	Driving direction inversion system mounted on the steering column
<b>Dual Reverse</b>	Dual driving direction inversion system, on both the steering column and the joystick
<b>Tac-lock</b>	Hydraulic attachment clamping system controlled from the cab



**MERLO S.P.A.**

Via Nazionale, 9  
12010 S. Defendente di Cervasca  
(Cuneo) Italia  
Tel. +39 0171 614111  
Fax +39 0171 684101

[info@merlo.com](mailto:info@merlo.com)  
[www.merlo.com](http://www.merlo.com)



DS\_MF347\_0419\_ENG