



PANORAMIC P30.10  
PANORAMIC P30.10 L





## PERFORMANCE AND FEATURES

## P30.10

## P30.10 L

### PERFORMANCE

Total unladen weight (kg)

7100

7100

Maximum capacity (kg)

3000

3000

Lifting height (m)

9,6

9,6

Maximum reach (m)

6,5

6,5

Maximum operating height (m)

9,6

9,6

Maximum operating reach (m)

2,3

2,3

Capacity at maximum height (kg)

3000

3000

Capacity at maximum reach (kg)

1000

1000

Lateral boom movement (mm)

-

-

Tilting correction (%)

-

-

Boom sections

3

3

### POWERTRAIN

Turbo motor

Deutz TD2.9

Deutz TD2.9

Displacement/cylinders

2900/4

2900/4

Engine Power (kW/HP)

55,4/75

55,4/75

Anti-pollution technology

STAGE IIIB, DOC

STAGE IIIB, DOC

Reversible fan

●

●

Maximum speed (km/h)

40

40

Fuel tank (l)

80

80

AdBlue tank (l)

-

-

Hydrostatic transmission

● - 2V

● - 2V

EPD

-

-

Axles

Axial

Axial

Reduction hub

Epicyclic

Epicyclic

Machine brakes

Dry disc

Dry disc

Automatic parking brake

●

●

### HYDRAULIC

Hydraulic pump

LS+FS

LS+FS

Flow rate/pressure (l/min – bar)

117-210

117-210

Hydraulic tank

85

85

Hydraulic outlet at the top of the boom

●

●

Rear hydraulic outlets

○

○

### CAB

Cab configuration

ECO

ECO

MCDC

Light

Light

FOPS LIV II cab

●

●

ROPS cab

●

●

Cab commands

Electronic joystick

Electronic joystick

Tilting Cab

-

-

Reverse shuttle

Dual reverse

Dual reverse

### CONFIGURATION

Cab suspension

-

-

Boom suspension

○

○

Suspension on axles

-

-

Work headlights on cab

○

○

Sun blind

○

○

Tac-lock

●

●

Provision for a platform

-

-

Two floating forks

●

●

Inching-Control

●

●

Four-wheel drive

●

●

Four-wheel steering

●

●

Three steering modes

●

●

Standard tyres

400/70-20"

400/70-20"

Optional tyres

405/70-24"

-

Stabilisers

Narrow

Narrow

Turret rotation

-

-

Type approval as an agricultural tractor

-

-

Approval with PNEUMATIC braking

-

-

Approval with HYDRAULIC braking

-

-

PTO

-

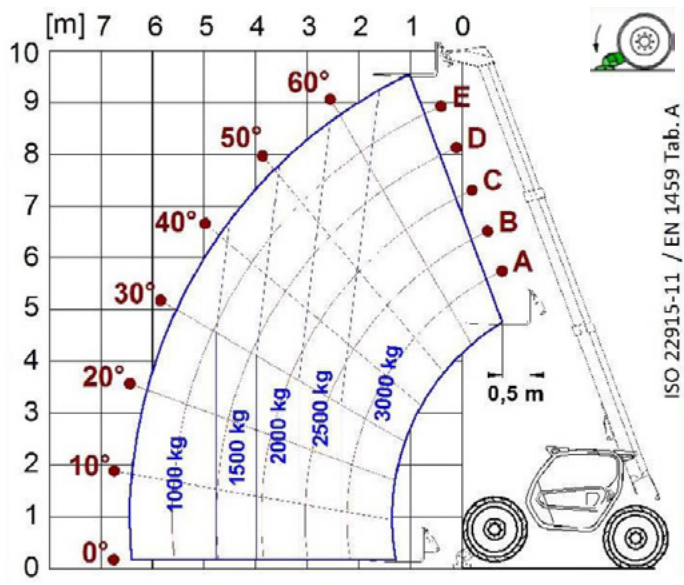
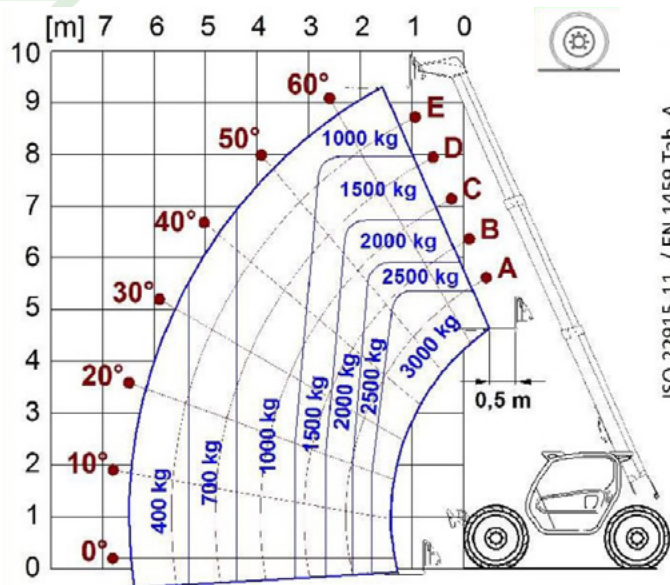
-

3-point linkage

-

-

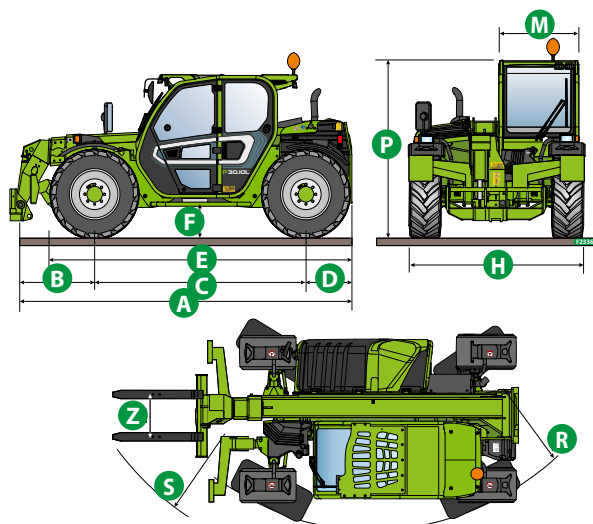
## LOAD CHARTS



P30.10

## DIMENSIONS

	P30.10	P30.10 L	
A (mm)	4600	4600	
B (mm)	1250	1250	
C (mm)	2740	2740	
D (mm)	610	610	
E (mm)	3920	3920	
F (mm)	340	340	
H (mm)	2100	2100	
M (mm)	995	995	
P (mm)	2120	2020	
R (mm)	4770	4770	
S (mm)	5280	5280	
Z (mm)	850	850	



## GLOSSAR

<b>SCR</b>	<b>Selective Catalyst Reduction</b> , solution used for the reduction of NOx in the exhaust gases through the injection of a liquid - UREA (AdBlue) - into the exhaust gases.
<b>DPF</b>	<b>Diesel Particulate Filter</b> , a solution used to reduce fine particle emissions in exhaust gases
<b>DOC</b>	<b>Diesel Oxidation Catalyst</b> , a solution used to reduce carbon monoxide (CO) and hydrocarbons in exhaust gases
<b>EGR</b>	<b>Exhaust Gas Recirculation</b> , a solution used to reduce NOx in exhaust gases by recirculating gas inside the combustion chamber of the engine.
<b>1-2V</b>	1 or 2 speed <b>Merlo gearbox</b>
<b>CVTronic</b>	<b>Continuous variation Merlo gearbox</b> , for constant acceleration without loss of torque
<b>EPD</b>	<b>Eco Power Drive</b> , Merlo electronically-controlled hydrostatic transmission Electronic, enables effective RPM management in order to reduce overall fuel consumption by the machine
<b>EPD Plus</b>	In addition to the <b>EPD</b> Control, it is also possible to work using Speed Control (maintaining a constant travel speed) and Heavy Load (management of RPM in order to maximise performance for tasks such as: bucketing operations, heavy duty unloading, etc.)
<b>EPD Top</b>	In addition to the <b>EPD Plus</b> control function, this enables the RPM to be managed directly using the joystick
<b>Gear</b>	<b>Fixed displacement pump with gears</b> , combined with an open centre hydraulic distributor
<b>LS</b>	Variable displacement pump with <b>Load Sensing</b> control, combined with a closed centre hydraulic distributor
<b>LS+FS</b>	Variable displacement pump with <b>Load Sensing</b> control, combined with a closed centre hydraulic distributor equipped with solenoid valves and <b>Flow Sharing</b> control.
<b>Kabine ECO/PREMIUM</b>	<b>MODULAR</b> type cabin with simplified or PREMIUM equipment
<b>MCDC</b>	Merlo Dynamic Load Control, electronic control of the machine's anti-overturn system. • <b>Light</b> : Simplified version; • <b>Complete</b> : Version with display in cab.
<b>FOPS</b>	Falling object protective structure, the system which shields the operator from heavy objects falling onto the cab. Two levels: • <b>FOPS Liv I</b> : Object with a weight of 45 kg falling from 3 metres • <b>FOPS Liv II</b> : Object with a weight of 227 kg falling from 5.2 metres
<b>ROPS</b>	<b>Roll-over protection system</b> (or roll-over protection structure), the system that protects the operator if the vehicle rolls over
<b>Finger Touch</b>	Driving direction inversion system mounted on the steering column
<b>Dual Reverse</b>	Dual driving direction inversion system, on both the steering column and the joystick
<b>Tac-lock</b>	Hydraulic attachment clamping system controlled from the cab



**MERLO S.P.A.**

Via Nazionale, 9  
12010 S. Defendente di Cervasca  
(Cuneo) Italia

Tel. +39 0171 614111

Fax +39 0171 684101

[info@merlo.com](mailto:info@merlo.com)

[www.merlo.com](http://www.merlo.com)



DS\_P3010\_0419\_ENG