



MULTIFARMER

MF40.9 CS - MF40.7 CS



PERFORMANCE AND FEATURES

MF40.7CS

MF40.9CS

PERFORMANCE

Total unladen weight (kg)

8700

9150

Maximum capacity (kg)

4000

4000

Lifting height (m)

6,8

8,8

Maximum reach (m)

3,6

5,8

Maximum operating height (m)

6,8

8,8

Maximum operating reach (m)

1,7

1,7

Capacity at maximum height (kg)

4000

4000

Capacity at maximum reach (kg)

1900

1000

Lateral boom movement (mm)

-

-

Tilting correction (%)

+/-8

+/-8

Boom sections

2

3

POWERTRAIN

Turbo motor

FPT NEF45

FPT NEF45

Displacement/cylinders

4500/4

4500/4

Engine Power (kW/HP)

125/170

125/170

Anti-pollution technology

STAGE IV, SCR+DOC

STAGE IV, SCR+DOC

Reversible fan

-

-

Maximum speed (km/h)

40

40

Fuel tank (l)

150

150

AdBlue tank (l)

18

18

Hydrostatic transmission

CVTronic

CVTronic

EPD

Top

Top

Axles

Axial

Axial

Reduction hub

Epicyclic

Epicyclic

Machine brakes

Wet disc

Wet disc

Automatic parking brake

●

●

HYDRAULIC

Hydraulic pump

LS+FS

LS+FS

Flow rate/pressure (l/min – bar)

150 - 210

150 - 210

Hydraulic tank

96

96

Hydraulic outlet at the top of the boom

●

●

Rear hydraulic outlets

4 - ●

4 - ●

CAB

Cab configuration

Premium

Premium

MCDC

Full

Full

FOPS LIV II cab

●

●

ROPS cab

●

●

Cab commands

Electronic joystick

Electronic joystick

Tilting Cab

-

-

Reverse shuttle

Dual reverse

Dual reverse

CONFIGURATION

Cab suspension

●

●

Boom suspension

○

○

Suspension on axles

-

-

Work headlights on cab

●

●

Sun blind

●

●

Tac-lock

●

●

Provision for a platform

○

○

Two floating forks

●

●

Inching-Control

●

●

Four-wheel drive

●

●

Four-wheel steering

●

●

Three steering modes

●

●

Standard tyres

500/70-R24

500/70-R24

Optional tyres

600/55-26.5

600/55-26.5

Stabilisers

-

-

Turret rotation

-

-

Type approval as an agricultural tractor

●

●

Approval with PNEUMATIC braking

○

○

Approval with HYDRAULIC braking

○

○

PTO

●

●

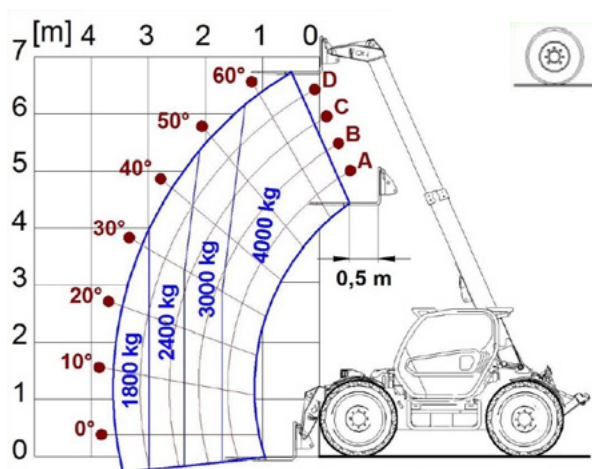
3-point linkage

●

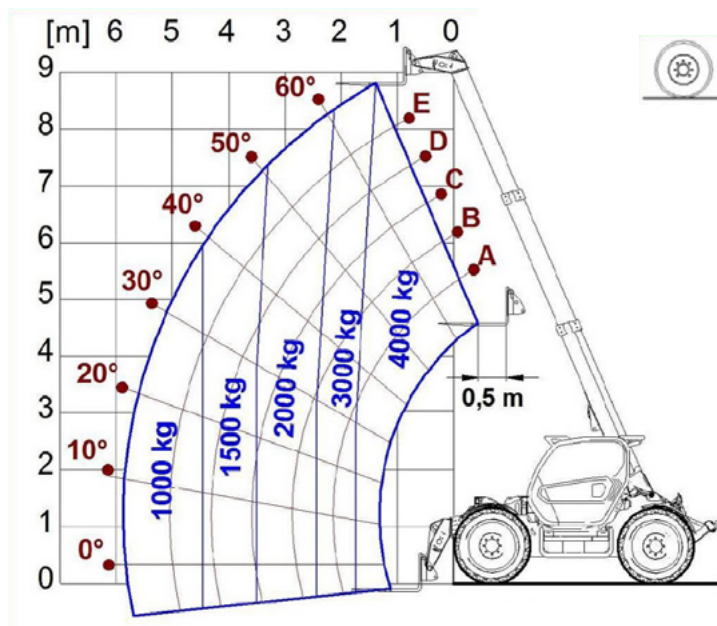
●

- Not Available. ● standard. ○ optional.

LOAD CHARTS



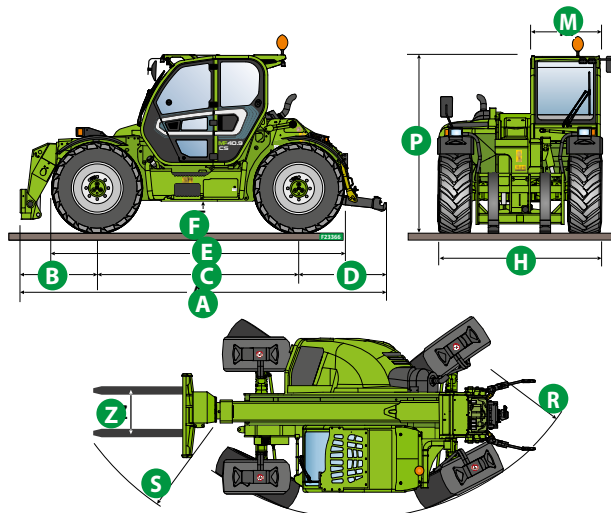
MF40.7



MF40.9

DIMENSIONS

	MF40.7	MF40.9	
A (mm)	5310	5490	
B (mm)	1110	1290	
C (mm)	2920	2920	
D (mm)	1280	1280	
E (mm)	4270	4270	
F (mm)	430	430	
H (mm)	2350	2350	
M (mm)	995	995	
P (mm)	2510	2510	
R (mm)	4210	4210	
S (mm)	4890	5030	
Z (mm)	850	850	



GLOSSAR

SCR	Selective Catalyst Reduction , solution used for the reduction of NOx in the exhaust gases through the injection of a liquid - UREA (AdBlue) - into the exhaust gases.
DPF	Diesel Particulate Filter , a solution used to reduce fine particle emissions in exhaust gases
DOC	Diesel Oxidation Catalyst , a solution used to reduce carbon monoxide (CO) and hydrocarbons in exhaust gases
EGR	Exhaust Gas Recirculation , a solution used to reduce NOx in exhaust gases by recirculating gas inside the combustion chamber of the engine.
1-2V	1 or 2 speed Merlo gearbox
CVTronic	Continuous variation Merlo gearbox , for constant acceleration without loss of torque
EPD	Eco Power Drive , Merlo electronically-controlled hydrostatic transmission Electronic, enables effective RPM management in order to reduce overall fuel consumption by the machine
EPD Plus	In addition to the EPD Control, it is also possible to work using Speed Control (maintaining a constant travel speed) and Heavy Load (management of RPM in order to maximise performance for tasks such as: bucketing operations, heavy duty unloading, etc.)
EPD Top	In addition to the EPD Plus control function, this enables the RPM to be managed directly using the joystick
Gear	Fixed displacement pump with gears , combined with an open centre hydraulic distributor
LS	Variable displacement pump with Load Sensing control, combined with a closed centre hydraulic distributor
LS+FS	Variable displacement pump with Load Sensing control, combined with a closed centre hydraulic distributor equipped with solenoid valves and Flow Sharing control.
Kabine ECO/PREMIUM	MODULAR type cabin with simplified or PREMIUM equipment
MCDC	Merlo Dynamic Load Control, electronic control of the machine's anti-overturn system. • Light : Simplified version; • Complete : Version with display in cab.
FOPS	Falling object protective structure, the system which shields the operator from heavy objects falling onto the cab. Two levels: • FOPS Liv I : Object with a weight of 45 kg falling from 3 metres • FOPS Liv II : Object with a weight of 227 kg falling from 5.2 metres
ROPS	Roll-over protection system (or roll-over protection structure), the system that protects the operator if the vehicle rolls over
Finger Touch	Driving direction inversion system mounted on the steering column
Dual Reverse	Dual driving direction inversion system, on both the steering column and the joystick
Tac-lock	Hydraulic attachment clamping system controlled from the cab



MERLO S.P.A.

Via Nazionale, 9
12010 S. Defendente di Cervasca
(Cuneo) Italia

Tel. +39 0171 614111

Fax +39 0171 684101

info@merlo.com

www.merlo.com



DS_MF40_0419_ENG